

STILL HAVEN'T FOUND

Db major

U2

INTRO

D_b D_b D_b D_b

VERSE 1,2

D_b D_b D_b D_b
G_b G_b D_b D_b
D_b D_b D_b D_b
G_b G_b D_b D_b

CHORUS

A_b G_b D_b D_b
A_b G_b D_b D_b

SOLO

D_b D_b D_b D_b
D_b D_b G_b G_b D_b D_b

VERSE 3

D_b D_b D_b D_b
G_b G_b D_b D_b
D_b D_b D_b D_b
G_b G_b D_b D_b

CHORUS

A_b G_b D_b D_b
A_b G_b D_b D_b

CODA

D_b D_b D_b D_b
G_b G_b D_b D_b

Db major

LUCILLE

Little Richard

INTRO

Db Db Db Db Gb Gb

Db Db Ab Gb Db Ab

VERSE 1

Db Db Db Db Gb Gb

Db Db Ab Gb Db Ab

VERSE 2

Db Db Db Db Gb Gb

Db Db Ab Gb Db Db

VERSE 3

Db Stop Db Stop Db Stop Gb Gb

Db Db Ab Gb Db Db

SOLO

Db Db Db Db Gb Gb

Db Db Ab Gb Db Db

VERSE 4

Db Stop Db Stop Db Stop Gb Gb

Db Db Ab Gb Db Db

VERSE 5

Db Db Db Db Gb Gb

Db Db Ab Gb Stop Db Db D Db

Db major

RED RED WINE

UB40

CHORUS

D_b G_b A_b G_b D_b G_b A_b G_b

D_b G_b A_b G_b A_b G_b A_b

D_b G_b A_b G_b D_b G_b A_b G_b

D_b G_b A_b G_b A_b G_b A_b

D_b G_b A_b G_b

VERSE 1

A_b D_b G_b D_b

A_b D_b G_b A_b

CHORUS

D_b G_b A_b G_b D_b G_b A_b G_b

D_b G_b A_b G_b A_b G_b A_b

SOLO

D_b G_b A_b G_b D_b G_b A_b G_b

VERSE 2

A_b D_b G_b D_b

A_b D_b G_b A_b

CHORUS

D_b G_b A_b G_b D_b G_b A_b G_b

D_b G_b A_b G_b A_b G_b A_b

SOLO

D_b G_b A_b G_b D_b G_b A_b G_b

CHORUS

D_b G_b A_b G_b D_b G_b A_b G_b

Repeat & fade

Bbminor/Bbmajor

RUNAWAY

Del Shannon

INTRO

B_bm

VERSE, SOLO

B_bm B_bm A_b A_b
G_b G_b F7 F7
B_bm B_bm A_b A_b
G_b G_b F7 F7

CHORUS

B_b B_b Gm Gm
B_b B_b Gm Gm
B_b B_b Gm Gm
B_b B_b Gm Gm
E_b E_b F F
B_b 1 E_b B_b F

CODA

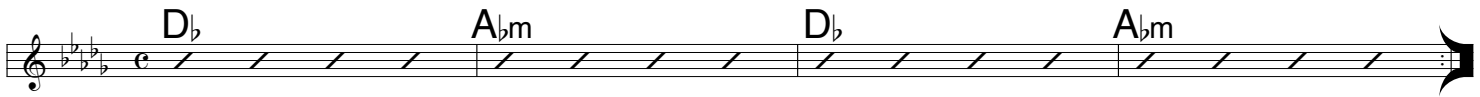
B_b 2 E_b B_b E_b

Repeat & fade

Dbmajor

MILLENIUM

Robbie Williams



Db major/Emajor

HUNGRY HEART

Bruce Springsteen

INTRO

Db Bbm Ebm Gb/Ab

VERSE 1,2

Db Bbm Ebm Gb/Ab

CHORUS

Db Bbm Ebm Gb/Ab

SOLO

E C#m F#m A/B

VERSE 3

Db Bbm Ebm Gb/Ab

CHORUS

Db Bbm Ebm Gb/Ab

Repeat & fade

Bbminor/Dbmajor

THE LETTER

Joe Cocker

INTRO

B_bm B_bm B_bm B_bm

VERSE 1,2,3,Solos,4

B_bm B_bm G_b7 G_b7
B_bm B_bm E_b E_b
B_bm B_bm/A_b B_bm/G G_b
F7 F7 B_bm E_b7 B_bm E_b7

To Coda

CHORUS

D_b A_b G_b D_b
A_b A_b A_b A_b F7 F7

D.S. al Coda

CODA

B_bm E_b7 B_bm E_b7

Play many times

Db major

YOU'RE NO GOOD

Linda Ronstadt

INTRO

B_♭m Eb B_♭m Eb B_♭m Eb B_♭m Eb

VERSE 1,2

B_♭m Eb B_♭m Eb B_♭m Eb B_♭m Eb

G_♭ A_♭ D_♭ D_♭ C B B_♭m Eb F7sus4

CHORUS

B_♭m Eb B_♭m Eb B_♭m Eb B_♭m Eb

B_♭m Eb B_♭m Eb B_♭m Eb B_♭m Eb ¹ B_♭m Hold ²

SOLO

B_♭m7sus4 E_♭/B_♭ G_♭7 B_♭m7sus4 E_♭/B_♭ G_♭7

B_♭m7sus4 E_♭/B_♭ G_♭7 B_♭m7sus4 E_♭/B_♭ G_♭7

G_♭ A_♭ D_♭ B_♭m Eb F7sus4 F7sus4

CHORUS

B_♭m Eb B_♭m Eb B_♭m Eb B_♭m Eb

B_♭m Eb B_♭m Eb B_♭m Eb B_♭m Eb

B_♭m Eb B_♭m Eb B_♭m Eb B_♭m Eb

B_♭m Stop

SOLO

B_♭m D_♭ E_♭ A_♭

Repeat & fade

B/Db major

WHAT'S LOVE GOT TO DO WITH IT

Tina Turner

INTRO

G#m7sus4 Hold *F#/G# Hold*

VERSE 1,2

G#m7sus4 Hold *F#/G# Hold*

G#m7sus4 Hold *F#/G# Hold* *E F# Hold*

E F# Hold *E F#*

CHORUS

B F# E F# *B F# E F#*

B F# E F# *B F# E F#*

SOLO

Db Ab Gb Ab *Db Ab Gb Ab* *Db Ab Gb Ab*

Db Ab Gb Ab *Db Ab Gb*

BRIDGE

Cb/Db Db Cb/Db Db

A B/A Abm Db

CHORUS

Db Ab Gb Ab *Db Ab Gb Ab*

Db Ab Gb Ab *Db Ab Gb*

Repeat & fade